



*Jai Srimannarayana*

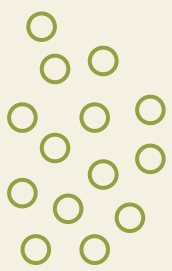


# JET Sri Balaji Temple Perth

## Green Life Project (BGLP)

### Landscaping & Tree Planting

### Initiative





# How can we achieve this project

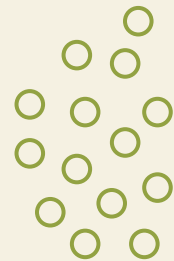


1. With generous donations

2. Volunteers who can contribute their time, effort & commitment towards trees plantation

(watch out for volunteering details email)

**Donations:**  
**JEEYARS ACHARYA PEETTAM AUSTRALIA**  
BSB: 306 188  
Account Number: 0361242  
Reference: **BGLP** your mobile number





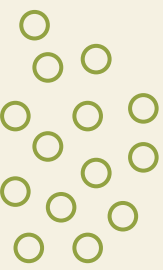
# Budget Estimate

Budget cost of Landscaping & Tree planting project in all stages :  
**\$150k ( Over next 3-5 Years)**



We sincerely thank each and every family for all their contributions towards the Balaji Temple journey

We look forward to your support for this once in a lifetime green and environmentally sustainable initiative



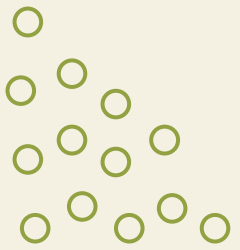
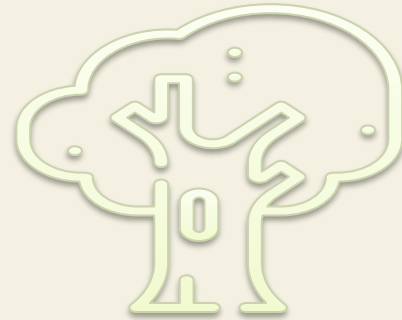
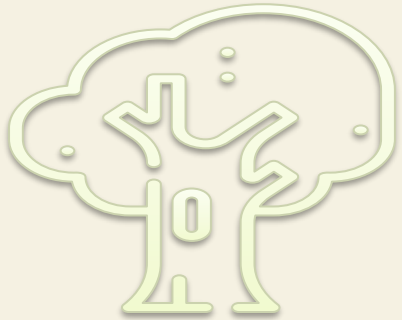
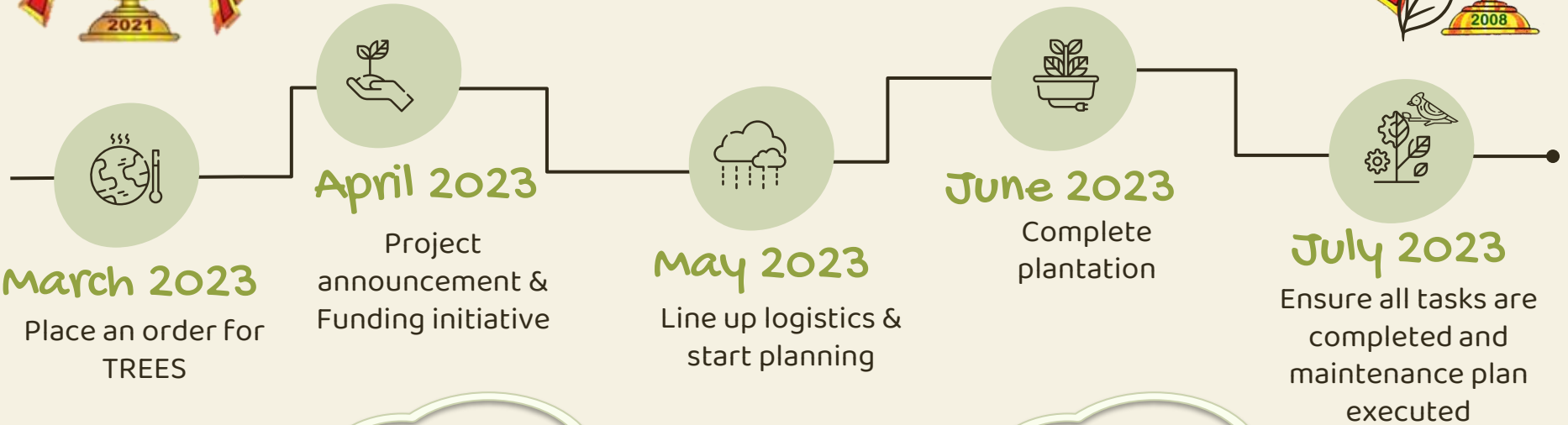


## Stages of the Landscaping & Tree planting Project costs with Budget estimate

<b>Landscaping Stage 1</b>	April 2023- June 2023- Perimeters of the site	<b>\$ 70,000 ( Approx )</b>
<b>Landscaping Stage 2</b>	Late 2024- Close to Temple, Car Park & Priest Quarters	<b>\$ 47,000 ( Approx )</b>
<b>Landscaping Stage 3</b>	Late 2026- Close to Library and Kitchen	<b>\$ 13,000 ( Approx )</b>
<b>Landscaping - Ongoing</b>	Ongoing Folly Pool Rehabilitation ( Eastern side of site)	<b>\$ 10,000 ( Approx )</b>
<b>Total for Landscaping</b>	Including Costs for Water Carting in First summer 2023-24	<b>\$ 150,000</b>



# Timeline – Stage 1





# Details of Trees ( Stage 1 )



	Large Trees	Small Trees	Shrubs	Hedges
<b>Number Needed</b>	60	66	165	50
<b>Cost / tree</b> (planning, purchasing, maintenance for few years etc)	\$250 / tree  Total: \$15,000	\$150 / tree  Total: \$10,000	\$100 / shrub  Total: \$16,500	\$100 / hedge  Total: \$5,000



# LANDSCAPE



2008

## GENERAL NOTES

1. All dimensions are in meters (m) unless otherwise specified.
2. Do not scale from this drawing for construction purposes.
3. The contractor shall consult with the relevant authorities for all necessary permits and approvals.
4. In case of any discrepancy whatsoever, the contractor shall refer to the original drawings and specifications.
5. The contractor shall ensure that all work is completed within the stipulated time frame.
6. The contractor shall ensure that all work is completed in accordance with the relevant codes of practice and standards.
7. The contractor shall ensure that all work is completed in accordance with the relevant codes of practice and standards.
8. The contractor shall ensure that all work is completed in accordance with the relevant codes of practice and standards.
9. The contractor shall ensure that all work is completed in accordance with the relevant codes of practice and standards.

Revision	Description	Date
REV 1	DEVELOPMENT APPLICATION SUBMISSION	DEC 2007
REV 1	AMENDMENTS IN RESPONSE TO COUNCIL PUBLIC QUERIES/COMMENTS	FEB 2008
REV 2	AMENDMENTS IN RESPONSE TO DEFENDABLE AUTHORITY REPORT	MAY 2008
REV 3	AMENDMENTS IN RESPONSE TO MISCADP	MAY 2008
REV 4	AMENDMENTS IN RESPONSE TO DRP	MAY 2008
REV 5	RE-SUBMISSION TO COUNCIL	MAY 2008
REV 6	AMENDMENTS IN RESPONSE TO SAT MEDIAN	MAY 2008

Project: SRI BALAJI TEMPLE DEVELOPMENT  
Site Address: 67 FOLLY ROAD, MELBOURNE VIC 3000



## LANDSCAPE LEGEND

- |   |                                 |
|---|---------------------------------|
| <b>T1</b> EUCALYPT RUDIS<br>FLOODED GUM                 | EXISTING TREES (OVER 5m HEIGHT) |
| <b>T2</b> MELALEUCA CUTICULARIS<br>SALT WATER PAPERBARK | TREES TO BE REMOVED             |
| <b>T3</b> MELALEUCA RHAPHIOPHYLLA<br>SINKAP PAPERBARK   | PROPERTY BOUNDARY               |
| <b>T4</b> EUCALYPT RUDIS<br>FLOODED GUM                 | EXTERNAL PAVING                 |
| <b>T6</b> BANKSIA MENSIESII<br>FIREWOOD BANKSIA         | VERANDAH UNDERCOVER             |
| <b>T8</b> CALLISTEMON<br>KINGS PARK SPECIAL BOTTLEBRUSH | FULLY ENCLOSED COVERED AREA     |
| <b>T9</b> MELALEUCA QUINQUINERVA                        | FIREBREAK                       |
| <b>T10</b> WESTRINGIA<br>COASTAL ROSEMARY               | GARDEN BEDS AND EDGE PLANTS     |
| <b>T11</b> ADONANTHOS<br>WOOLY BUSH                     | GROUND COVERS/GRASS             |
|   | CARPARK SMALE                   |
|   | EXTENT OF ASBESTOS              |





1-5m

Adenanthos Sericea (Wooly Bush)



20m

Eucalyptus Rudis  
(Flooded Gum)



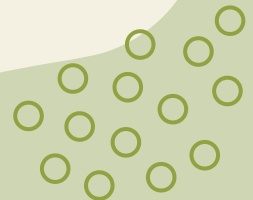
3-4m

Callistemon (Kings Park Special)



2m

Westringia Naringa Hybrid (Coastal Rosemary)







THANK YOU

Serve all Beings  
as Service to  
God

Our Gratitude and Humble  
Pranamams to  
His Holiness  
Sri Sri Sri Tridandi Chinna Jeeyar  
Swamiji  
for his blessings

